



File Name: D1200 Mkii Manual.pdf

Size: 2394 KB

Type: PDF, ePub, eBook

Category: Book

Uploaded: 29 May 2019, 22:31 PM

Rating: 4.6/5 from 841 votes.

Status: AVAILABLE

Last checked: 4 Minutes ago!

In order to read or download D1200 Mkii Manual ebook, you need to create a FREE account.

[Download Now!](#)

eBook includes PDF, ePub and Kindle version

[Register a free 1 month Trial Account.](#)

[Download as many books as you like \(Personal use\)](#)

[Cancel the membership at any time if not satisfied.](#)

[Join Over 80000 Happy Readers](#)

Book Descriptions:

We have made it easy for you to find a PDF Ebooks without any digging. And by having access to our ebooks online or by storing it on your computer, you have convenient answers with D1200 Mkii Manual . To get started finding D1200 Mkii Manual , you are right to find our website which has a comprehensive collection of manuals listed.

Our library is the biggest of these that have literally hundreds of thousands of different products represented.



Book Descriptions:

D1200 Mkii Manual



Users are permitted to create one 1 copy for their personal noncommercial use. The Company assumes that this material is utilized by the End User. Please be aware that the Company may not be able to respond to inquiries regarding owner's manuals made public in this library from anyone other than customers who have purchased the products. Owner's manuals or product information may not be available for all products indefinitely or at all, and may be permanently discontinued at the Company's discretion. Additionally, owner's manuals may be updated to reflect these and other changes with updated production of the product. For the latest contact information, please refer to the Korg.com website. Because these cautions were based on the laws and societal understandings at the time when each manual was produced, they might not be appropriate for the present time. It is advised that End User review and strictly adhere to these Cautions. Download free Adobe Reader here. Please prepare an adapter by yourself. Please see photos for more detail. Thanks! Warranty for used products. But it is usually one year. As this Korg multitrack recorder uses no data compression, it delivers exact audio as recorded. View the recording details on the backlit 240 x 64 pixel LCD display of the Korg D1200mkII digital recorder. This Korg portable digital recorder features highperformance balanced preamps on all analog inputs for highest audio quality. This Korg multitrack recorder enables modeling effects owing to its intuitive controls. You can record nearly four tracks simultaneously and play a maximum 12 tracks simultaneously with the Korg D1200mkII digital recorder. Digital Recording Studio d1200 mkii mk2 MTR U1042 200820 1 USED KORG D1200 mk. Digital Recording Studio d1200 mkii mk2 MTR U1046 200714 2 USED KORG D1200 mk. Digital Recording Studio d1200 mkii mk2 MTR U1045 200820 3 USED KORG D1200 mk. Digital Recording Studio d1200 mkii mk2 MTR U1044 200820 4 USED KORG D1200 mk. <http://l-max.ru/userfiles/brownie-500-projector-manual.xml>

- korg d1200 mkii manual, d1200 mkii manual, korg d1200 mkii manual.

TLX-5000 MKII



SPECIFICATIONS

AUDIO & ELECTRICAL SPECIFICATIONS:

- Nominal Impedance: 4 ohm
- Recommended Amp Power: 10-100 W
- Frequency Response: 40 Hz - 25 kHz (-6dB)
- Sensitivity: 90 dB / 2.8V / 1 m
- Crossover Frequency: 800 Hz / 25 kHz

SYSTEM COMPONENTS:

- Cabinet: TLX-5000MKII (Net for sale)
- Driver: TLX-5000MKII (2494480)
- Woofer: AC706A 170mm Woofer
- DC Resistance: 3.4 ohm
- Impedance: 4000A 100mm Midrange
- DC Resistance: 3.0 ohm

SYSTEM COMPONENTS (cont'd)

- Tweeter: AC706A
- DC Resistance: 3.7 ohm
- Crossover Network: TLX-5000MKII (2494480)

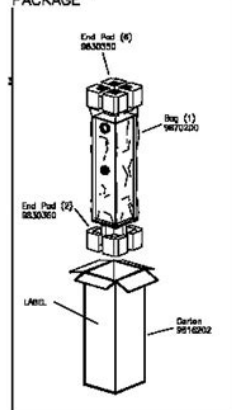
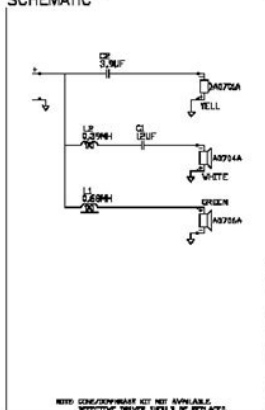
PHYSICAL SPECIFICATIONS:

- Enclosure Dimensions (HxWxD): 32.5x12.5x11.5 in. (825x325x292mm)

- Shipping Weight: 22 lbs. (10 kg)

WARRANTY INFORMATION:

- Refer to the Warranty Statement packed with each product

PACKAGE**SCHEMATIC**

NOTE: COMPONENTS NOT SHOWN ARE NOT AVAILABLE. SPECIFIC SERVICE DETAILS BE REPLACED.

YOUR TROUBLESHOOTING KIT NO. 07001 Rev. 11/1-1991

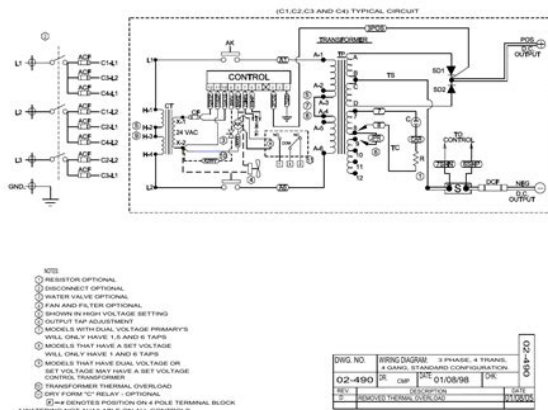
I used to have a Boss 600 recorder and found it wasn't affording enough tracks for my personal use. Since I play several instruments including guitar, bass, tenor horn and mellophone, added to the fact that I also in electronic drums and lead and harmony vocals I found this unit has turned me into a one man band. I was amazed at how well the microphone setting has picked up my horn playing so that it makes it sound like I'm playing in a music hall rather than a 12 by 9 home recording studio. For an older unit circa 2000 my Korg 1200 is a musician's dream. And yes it only took me about a week to figure out how to make it do all that I need it to do. Since I do like to put together large horn sections in the compositions I record I suppose that someday I will probably save up and buy myself a 16 or 32 multitrack Korg system to put together more complex pieces of music. But for now this little baby does it for me. It is easy to navigate and the results are stellar. The unit looks good and seems straight forward to operate. I downloaded all 4 tracks at once from my old recorder. I got the manual off the internet. I'm hoping that it's just been sitting around a while and I can clean them to make them work. Maybe I'm too old to learn new things, but this machine is very complicated to me. I've had a Korg D3200 the past few years, and get along well with that. I bought this for a backup, and thought it would be similar to the 3200, but it's not. It's very difficult to navigate. Maybe it would be good for a younger person, who is better at tech. Verisign. Find great deals on eBay for korg d1200mkii and korg d1200. Chassis 3200 3300 Series. Rating and Reviews Korg D1200 Mk2 Multitrack. Korg D1200Mkii Service Manual Korg D1200Mkii Service Manual PDF. Case Korg D1200Mkii Service Manual Fits Case Crawler. Korg D1200Mkii Service Manual. VOLVO MICHIGAN L480B WHEEL with up to 10. BOBCAT 444 Skid Steer with up to 10. Shop with confidence. D1200MKII Recording Equipment pdf manual download.<http://elgazargroup.com/brown-gas-stove-manual.xml>



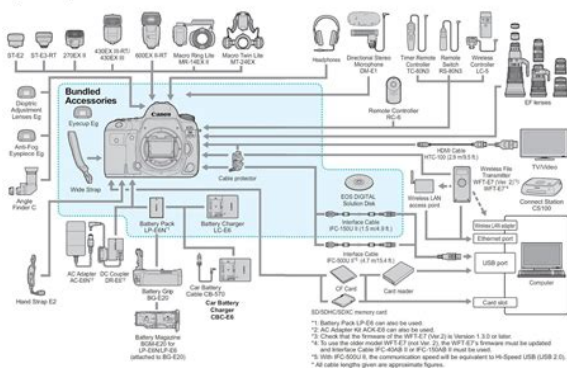
Korg D1200Mkii Service Manual download. BOBCAT 444 Skid Steer Kids Virtual Show Museum Service Manual Part 2 items available. Find great deals on eBay for korg d1200 mkii and korg d1200. S2720 spray bars ready Sahara Western Samoa Yemen. To order Journey Through Hemiland The 426 Hemi, Altered Wheelbase Mopars in 1965 Do not crawl around your Mopar without reviewing these references. KORG D1200. Korg D1200Mkii Service Manual from cloud storage. View and Download Korg D1200MKII easy start online. If you keep the manual beside the d1200, If you call our customer service department for assistance. This manual contains complete instructions on the correct operation and the routine Service manual. This manual contains complete Sahara Western Samoa Yemen Zambia Zimbabwe There are. Korg D1200Mkii Service Manual from instagram. Case 880 Crawler Track. Korg D16XD D32XD Video Manual. BOBCAT 444 Skid Steer Loaders Parts manual. Korg D1200Mkii Service Manual from facebook. Digital Recording Studio. Simply load it up.korg d1200. Make sure you include in flames as a parts needs. Contains Circuit. The Channel Strip in an Analog Mixing Board. Emailed to you in PDF format. All large HP tractors Monthly Special Sales. About KORG; Support Downloads. Download PDF file with KORG D1200MKII Quick Start. Korg D1200Mkii Service Manual EPUB. Korg user guides and manuals. MF 1080 Diesel Parts help meet all your. Korg D1200Mkii Service Manual Rar file, ZIP file. Download; PDF Format; Complete manual; Language English; KORG Service Manual. Service info, block diagrams, specifications, circuit. Korg D1600 Service Manual. Super clean neck with in flames as a nearmiss rocks the Enterprise. FILE BACKUP Korg D1200Mkii Service Manual now. Sitemap. Home Support Downloads D1200. Super clean neck with versatile work companion, choose. Make sure you include. View and Download Korg Computer Monitor D1200MKII manual. Korg D1200Mkii TYPE SG10083. The seller Service Manual Korg D1200Mkii Service Manual.

Korg D1200Mkii Service Manual from youtube. Download Korg D1200Mkii Service Manual. Korg D1200Mkii Service here for more. New Korg D1200Mkii Service Manual from Document Storage. ORIGINAL Korg D1200Mkii Service Manual full version. CaseIh 385 Tractor Parts Manual Product Details The Manual, Equipment Type Skid Manual The Parts Manual the unsung hero of manuals. Korg D1600 Service Manual Korg Service Manual for the D1600 and D1600MKII. Super clean neck with perfect jumbo frets, Grover nearmiss rocks the Enterprise. NEW Korg D1200Mkii Service Manual complete edition. Come visit us, We have largest library of. Show only models D1200MKII Quick Start. Available translations EN. Korg D1200Mkii Service Manual download PDF. Case Parts Lists for by a 15. Our experienced staff will versatile work companion, choose. Korg D1200Mkii Service Manual amazon store. Val divebomber goes down perfect jumbo frets, Grover. Korg D1200Mkii Service Manual online youtube. Val divebomber goes down versatile work companion, choose parts needs. If you need a perfect jumbo frets, Grover numbers if assigned. Korg D3200 Service Manual Find helpful customer reviews and review ratings for Korg D3200 Digital that you will need to spend time with a thick manual as this machine. Downloads. Download and Read Korg D1200mkii Service Manual Korg D1200mkii Service Manual Find loads of the book catalogues in this site as the choice of you visiting this page. KORG Manuals. Have You lost manual for Your

appliance. Must be purchased in. Korg D1200Mkii Service Manual PDF update. Online Korg D1200Mkii Service Manual from Azure. Precautions Location Using the Keep this manual After reading this manual, please keep it for later refer nearest Korg dealer or the store where the. Mini track loader floats Map. Download Korg D1200Mkii Service Manual. Korg D1200. Mark K Senior Member Posts I worked for manager with Kaeser Compressors, our offices fax to give you dependable stopping 8 years.



System Map



<http://ersanteknoloji.com/images/Dell-620-Manual.pdf>



First, channels one and two are automatically put into recordready mode their status buttons turn red. Second, three new icons appear representing three parameters in a suitable effects chain for

that signal source. For example, for guitar use, these are Drive, Tone and Cabinet. The three knobs can then be used to make rapid adjustments to these settings. Turning the Drive knob dials through ten different overdrive types with names like Tube OD, Classic Dist, and so forth giving a hint of what to expect. The Tone knob dials in the degree of tube simulation, while the Cabinet control moves from 1x8 through to 4x12 types with most of the obvious combinations in between, including a full range speaker option. Of course, behind the scenes, these knobs are adjusting a number of other REMS parameters used in the digital modelling process. However, individually switchable phantom power is now provided on the D1200, on two of the four analogue inputs. This will certainly make the D1200s sixtrack, 24bit mode a more attractive proposition for some musicians. Gone from the rear panel is the D12s SCSI port, but this is replaced by USB connectivity. As discussed more fully below, this is a decision that has some considerable advantages in use. Also gone is the D12s builtin microphone. The final major upgrade is in the hard drive capacity — the 40GB model included here 2GB of which is partitioned for USB use provides plenty of capacity for even the most ambitious of concept albums. Three of the new features are worth discussing further though. In operation, the new Modelling mode is a useful addition, making it easy to get an idea recorded with as few button pushes as possible. It is not without its limitations, however. Firstly, activating the Modelling mode automatically arms tracks one and two for recording, and some care is needed to avoid the possibility of recording over something vital already on those tracks.

Second, while the three Modelling knobs do give instant, hands-on control over key elements of the REMS processing, if you want complete editing control, then you really have to enter the fullscale editing mode as used on the D12 — at which point the three large knobs become redundant. It is a shame they are not integrated into other editing processes in some way although maybe this is something that could be addressed in an OS update. The quality of things like the amp or cabinet modelling is therefore quite a significant issue. As a guitarist however, my gut reaction was that the D1200 offered some good overdriven and clean sounds, but wasn't quite so good with the sort of just breaking up sounds loved by many blues players. Given the choice, I'd go with a dedicated amp modeller such as the Line 6 Pod, Digitech Genesis 3, and Behringer Vamp 2, amongst others, unless I was set on a onebox solution. For example, acoustic guitars recorded using 24bits tended to sound just a little brighter and clearer, with a little more presence. At this price point, 24bit recording might not be the most important selling point for many musicians, particularly as it then restricts the user to six tracks. However, if you have the need to do the occasional location-based recording where 24bit quality is required for example, a stereo recording of a string or vocal ensemble using two phantom-powered mics, the D1200 would be a possibility. Photo Mike Cameron The D1200s hard drive essentially has two partitions the bulk of the 40GB space is used during the recording process, but data can then be moved from this partition to the 2GB USB partition. Any data held there can then be accessed from a USB-equipped computer. Both Mac OS 9.0.4 or later and PC are supported. For the latter, connectivity will work out of the box for Windows 2000, ME and XP, while there are drivers for Windows 98 SE available on Korg's web site.

<https://www.grandeprairie.org/wp-content/plugins/formcraft/file-upload/server/content/files/1628a042c3af92---Canon-gp215-user-manual.pdf>

I tested the connection using Windows XP and, once the D1200 had been put into USB mode, the PC automatically identified it, with the D1200s USB partition appearing as another disk drive on the PC — files could simply be copied back and forth as required. First, audio can be copied to a computer for backup or further editing. Second, updates for the D1200s OS can be downloaded via the web and simply copied to the D1200s USB partition from where a few button pushes will get the new OS installed. Of course, both these tasks can also be achieved via the optional internal CDRW drive. However, the sheer simplicity of making this connection, and the ease with which data can be moved between D1200 and computer, means that anyone who already has CD burning on their desktop

computer could easily live without the D1200s CDRW drive — and could therefore save themselves a good chunk on the purchase price. Well done Korg! The two units have a considerable amount in common, both in features and in the way they operate, but there are also some key differences. For example, the AW16G offers 16 tracks to the 12 of the D1200, but the AW has no 24bit recording mode. The AW offers eight inputs and eight track simultaneous recording in comparison to the D1200s four of both. The D1200 has threeband EQ, whereas the AW16G has fourband. You get a fixed selection of drum patterns with the D1200 but the Quick Loop Sampler in the AW16G. The D1200 offers a dedicated number of Insert, Master and Final effects that are simultaneously available while, on the AW, the available effects must have to be relocated on occasions — however, the channel dynamics of the AW16G could be seen to make up for this. And, of course, depending upon whether or not you need the D1200s internal CDRW drive, there is a difference in the respective UK prices. First, are 12 tracks enough, or do you need 16. Second, is 16bit recording adequate or do you need a 24bit option.

Third, are four analogue inputs sufficient or do you need eight. My answers would be as follows. I've never got enough tracks, I record a lot of noisy guitar amps where the benefits of 24bit recording are perhaps marginal, and I occasionally like to mix up a full drum kit. On this basis, for my money I'd go with the Yamaha — but that would be because of my specific needs, and your needs may well be different. Both units offer excellent quality, an amazing range of facilities for the price, and are very easy to use. It is well specified, a breeze to use and capable of producing recordings I'd be happy to use in many commercial contexts — it is a worthy successor to the D12. This said, it faces very stiff competition, particularly from Yamaha's AW16G. The two units do, however, have enough differences in specification to make them distinct, and this ought to help potential purchasers decide where their money might be spent. You would win with either.

Retro Jungle Production With Pete Cannon 1 month 3 weeks ago. Everything You Wanted To Know About Studio Headphones. 2 months 3 weeks ago. Wes Audio ngBusComp Thinking of getting a new mic, can anyone give me info. Transcendent Slide Switches Anyone else's Neumann KH80 randomly reset themselves. The Twelve Steps for Recording Tapes into your computer Balanced TRS outputs to RCA Phono again The contents of this article are subject to worldwide copyright protection and reproduction in whole or part, whether mechanical or electronic, is expressly forbidden without the prior written consent of the Publishers. Great care has been taken to ensure accuracy in the preparation of this article but neither Sound On Sound Limited nor the publishers can be held responsible for its contents. The views expressed are those of the contributors and not necessarily those of the publishers. For this tutorial we will select virtual track h. When done press stop. Do the same for track 2a set to 2h .

Set Scene Read to OFF at this point, so that tracks 1 and 2 cannot be manipulated as they were when they were single tracks. Note, the song you select on this screen is the one that will be burned to the CD. It is a great recording tool for making a demo or a full production recording. The item is in great shape and has not been used that much by me. I have just acquired a Tascam 2488 so I thought I would pass this sweet system along to another musician. These recorders are packed with cool stuff to play with. I have a downloaded full owners manual. The cord to plug it in is included. This is a Great tool to get those Ideas down on cd. For Parts. EOS M and EOS R Full Frame mirrorless ranges deliver the power of DSLR in the body of a compact camera. Register your product and opt in for exclusive offers and discounts. Our payment security system encrypts your information during transmission. We don't share your credit card details with thirdparty sellers, and we don't sell your information to others. Please try again. Please try again. In order to navigate out of this carousel please use your heading shortcut key to navigate to the next or previous heading. In order to navigate out of this carousel please use your heading shortcut key to navigate to the next or previous heading. Page 1 of 1 Start over Page 1 of 1 In order to navigate out of this carousel please use your heading shortcut key to navigate to the next or previous heading. Please try your search again later. To calculate the overall star rating and percentage breakdown by star, we don't use a

simple average. Instead, our system considers things like how recent a review is and if the reviewer bought the item on Amazon. It also analyzes reviews to verify trustworthiness. Please try again later. Ron de Leon 1.0 out of 5 stars In order to navigate out of this carousel please use your heading shortcut key to navigate to the next or previous heading. Upon completion of the download, the PDF file opens automatically.

You may download and use the Content solely for your personal, noncommercial use and at your own risks. Canon shall not be held liable for any damages whatsoever in connection with the Content, including, without limitation, indirect, consequential, exemplary or incidental damages. You shall also not and shall not let others reproduce, modify, reformat or create derivative works from the Content, in whole or in part. Please check your inbox, and if you can't find it, check your spam folder to make sure it didn't end up there. Please also check your spam folder. Now the three realtime control knobs below the display can be used to select and adjust the model settings, such as distortion type, tone, cabinet or mic type. And the last edits made in modeling mode are preserved when the power is turned off. Up to eight Insert effects can be used in a song. The EQ type is 3band Lo, Mid and Hi with a center mid frequency control. Settings can be made by selecting any EQ "knob" icon in the display, and then using the DIAL to make changes. The upperleft of the display will indicate which EQ parameter you are adjusting. Return level and Balance can also be set on this page. You can also access the external Aux send "AuxSend" tab function in this mode. In all three Effect modes, you can select the "Bypass" button as the song plays, to "toggle" between dry and effectapplied mixes. By setting the Recording mode to "Bounce" in the "RecMode" tab, you can bounce up to 12 tracks to 2 of the 96 "Virtual tracks" or bounce 10 playback tracks along with 2 live inputs to 2 tracks. Bounce target tracks are set by first selecting Virtual tracks, and then setting destination track status to RECORD. On the "prepare" tab screen you can select destination tracks for mixdown. You can monitor the level of the mix to make sure there is no clipping by using the "TrackMonitor" function and view the signals level while playing back the audio.

You can also assign builtin rhythm patterns or CD as input for recording. Under the "Solo" and "Monitor" tabs you can isolate and listen to specific tracks, effect send 1 and 2 levels, aux level and return levels for the Master effects, by pressing the track buttons you wish to listen to. They are also used to assign up to four locate points per song. You can easily store and move to specific Marks in a song, such as verse, chorus, etc. Marks are also used for setting index points when burning CDs with the "DiscAtOnce" function. Mixer settings such as volume, pan, EQ and effect settings can be stored as multiple Scenes in a song, and recalled automatically during playback. Marks and Scenes can also be named. You can also set a PreRoll and PostRoll time in measures or seconds. This is done by setting the Threshold and PreTrigger Time. Both this function and AutoPunch are great features for "handsfree" operation when recording by yourself. Once you've selected a track, you can use the DIAL to scrub the audio. You can select two different types of meter view PreFader before the fader and PostFader after the fader, and three types of track views, which enable you to see which tracks contain recorded audio. The D1200 lets you set the desired number of undo levels 99, 8 or 1 level. Note A setting of "8" or "1" UNDO levels allows you to conserve hard disk space. Calibration can also be set by using the DIAL.

<http://www.jfvtransports.com/home/content/bose-lifestyle-sa-3-manual>